

PHASE 1
STRATA PLAN **VIS6247**

FIRST SHEET
Sheet 1 of 2 Sheets

Deposited and Registered in the Victoria Land Title Office, this

23rd day of March, 2007.
C. Johnston per CB
Registrar

30/03/07

The Order of the Surveyor General

Dated March 21, 2007
has been filed in the Land Title Office in
Victoria, B.C. as Number FBR1612
C. Johnston per CB
Registrar



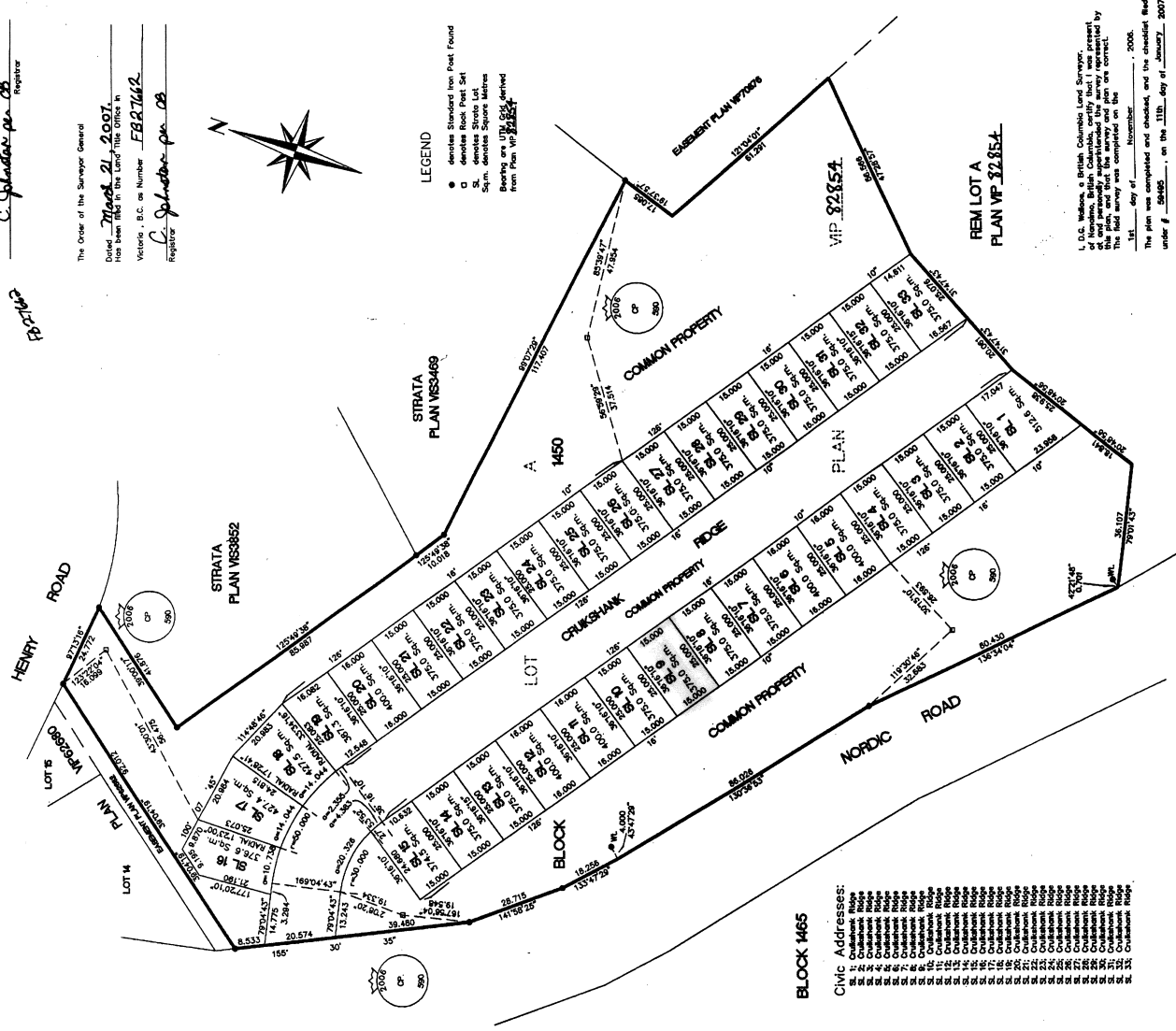
LEGEND

- denotes Standard from Post Found
 - denotes Standard Post Set
 - denotes Square Metres
 - ◻ denotes Square Metres
 - ◻ denotes Square Metres
- Bearings are UTM, SRS derived from Plan VP 32854

PHASE ONE OF A
PHASED BARELAND STRATA PLAN OF PART OF LOT A,
BLOCK 1450, COMOX DISTRICT, PLAN VP 32854

B.C.G.S. 927.074

Scale 1:750



BLOCK 1465

- Civic Addresses:
- 1465-100
 - 1465-101
 - 1465-102
 - 1465-103
 - 1465-104
 - 1465-105
 - 1465-106
 - 1465-107
 - 1465-108
 - 1465-109
 - 1465-110
 - 1465-111
 - 1465-112
 - 1465-113
 - 1465-114
 - 1465-115
 - 1465-116
 - 1465-117
 - 1465-118
 - 1465-119
 - 1465-120
 - 1465-121
 - 1465-122
 - 1465-123
 - 1465-124
 - 1465-125
 - 1465-126
 - 1465-127
 - 1465-128
 - 1465-129
 - 1465-130
 - 1465-131
 - 1465-132
 - 1465-133
 - 1465-134
 - 1465-135
 - 1465-136
 - 1465-137
 - 1465-138
 - 1465-139
 - 1465-140
 - 1465-141
 - 1465-142
 - 1465-143
 - 1465-144
 - 1465-145
 - 1465-146
 - 1465-147
 - 1465-148
 - 1465-149
 - 1465-150
 - 1465-151
 - 1465-152
 - 1465-153
 - 1465-154
 - 1465-155
 - 1465-156
 - 1465-157
 - 1465-158
 - 1465-159
 - 1465-160
 - 1465-161
 - 1465-162
 - 1465-163
 - 1465-164
 - 1465-165
 - 1465-166
 - 1465-167
 - 1465-168
 - 1465-169
 - 1465-170
 - 1465-171
 - 1465-172
 - 1465-173
 - 1465-174
 - 1465-175
 - 1465-176
 - 1465-177
 - 1465-178
 - 1465-179
 - 1465-180
 - 1465-181
 - 1465-182
 - 1465-183
 - 1465-184
 - 1465-185
 - 1465-186
 - 1465-187
 - 1465-188
 - 1465-189
 - 1465-190
 - 1465-191
 - 1465-192
 - 1465-193
 - 1465-194
 - 1465-195
 - 1465-196
 - 1465-197
 - 1465-198
 - 1465-199
 - 1465-200

LE ANDERSON & ASSOCIATES
B.C. Land Surveyors - Consulting Engineers
1000 West Broadway, Victoria, B.C. V8W 2E6
Tel: 251-1111 Fax: 251-1112

L.D.C. Wallace, a British Columbia Land Surveyor,
of the Province of British Columbia, in presence
of two witnesses appointed by the survey represented by
the plan, has surveyed the land shown on this plan.
The field survey was completed on the
1st day of November, 2006.
The plan was completed and checked, and the checklist filed
under # 58482, on the 11th day of January, 2007

THIS PLAN LIES WITHIN THE COMOX-STRATHCONA REGIONAL DISTRICT AND THE DISTRICT'S JURISDICTION.

ORIGINAL